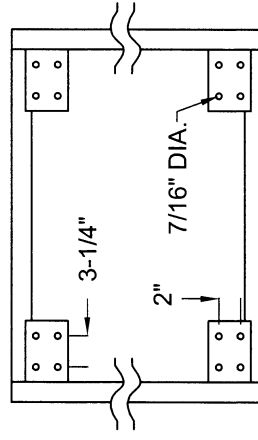


1-1/2 X 1-1/2 X 1/8" ANGLE IRON STAND



NOTES

1. 18-36 ARE 14 GA. HOUSING, 42-60 12 GA. HOUSING
2. 1/2" SPIRAL GUARD FRONT & REAR
3. RINGS ARE 1"X1"X 1/8" ANGLE IRON EXCEPT 48" & 60" WHICH HAS 1-1/2 X 1-1/2 X 1/8"
4. OPTIONAL CASTERS AVAILABLE (NOT SHOWN) TWO RIGID + TWO SWIVEL LOCKING

SIZE	A	B	C	D	E	F
18	18	20	20	28	23-1/2	32
24	24	26	20	28	29-1/2	32
30	30	32	20	28	35-1/2	32
36	36	38	24	28	41-1/2	32
42	42	44	24	28	47-1/2	32
48	48	51	28	36	53-1/2	32
60	60	63	36	56	67	56

Drawn by A. Plaza	Certified by	File Medium Stand - Man cooler
		Scale Not to scale
Page Number 1 of 1		Revision
		Date 5/11/08

Project	SEE DRAWING
Notes	

AMC NO.
Cust NO.

MEDIUM STAND - MANCOOLER

AMERICRAFT MANUFACTURING CO
P.O. Box 1108
Mason, Ohio 45040-1108